

THIS PLAT REPRESENTS A SURVEY OF:

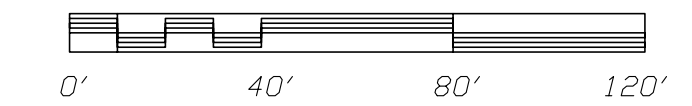
PARCEL ON
S. C. HIGHWAY 93

CITY OF CLEMSON
PICKENS COUNTY
SOUTH CAROLINA

AREA : 5.556 ACRES
TMP# 4054-15-64-6590
REF. D. B. 394 PG. 304
REF. P. B. 277 PG. 12-A

DATE : MARCH 9, 2007

SCALE : 1" = 40'



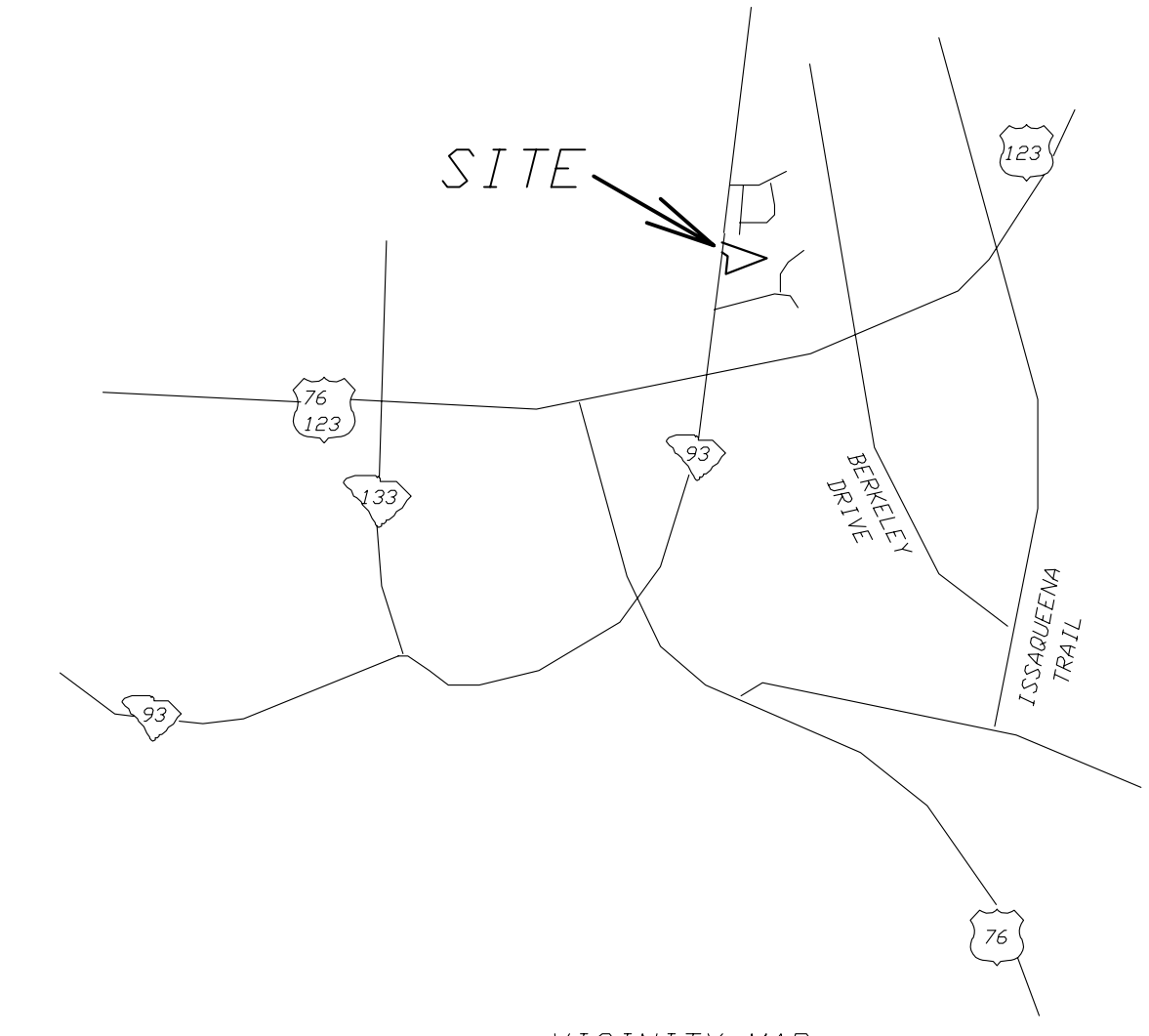
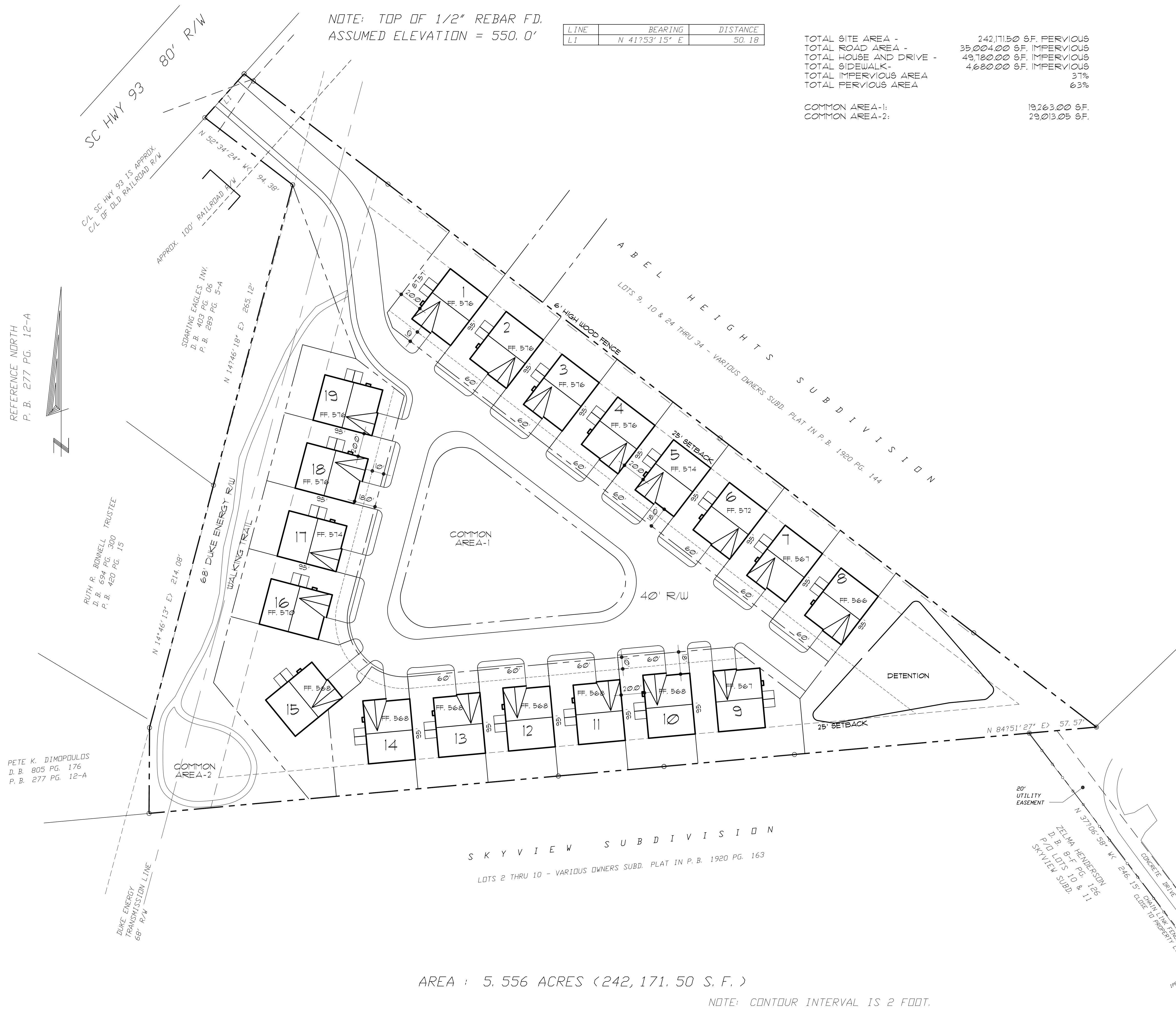
PLAT PREPARED FOR:

LINE	BEARING	DISTANCE
L1	N 41°53'15" E	50.18

TOTAL SITE AREA - 242,171.50 S.F. PERVIOUS
TOTAL ROAD AREA - 35,004.00 S.F. IMPERVIOUS
TOTAL HOUSE AND DRIVE - 49,180.00 S.F. IMPERVIOUS
TOTAL SIDEWALK - 4,680.00 S.F. IMPERVIOUS
TOTAL IMPERVIOUS AREA 37%
TOTAL PERVIOUS AREA 63%

COMMON AREA-1: 19,263.00 S.F.
COMMON AREA-2: 29,013.05 S.F.

NOTE: TOP OF 1/2" REBAR F.D.
ASSUMED ELEVATION = 550.0'



VICINITY MAP
(NOT TO SCALE)

AREA : 5.556 ACRES (242,171.50 S. F.)
NOTE: CONTOUR INTERVAL IS 2 FOOT.

CADDEZIGNS
532 Stagecoach Drive
Anderson, SC 29625

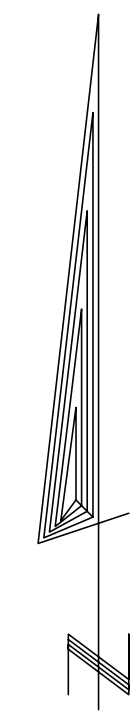
**SITE PLAN
EXHIBIT 'C'**

New Development For
Z & H, LLC
Hwy 93
Clemson, SC

DATE: 7/22/07
REVISED: xx

01

REFERENCE NORTH
P. B. 277 PG. 12-A



PETE K. DIMOPOULOS
D. B. 805 PG. 176
P. B. 277 PG. 12-A

RUTH R. BINNELL, TRUSTEE
D. B. 694 PG. 300
P. B. 420 PG. 15

SPARING EAGLES INV.
D. B. 403 PG. 06
P. B. 289 PG. 5-A

N 14°46'13" E 214.08'
68' DUKE ENERGY R/W
WALKING TRAIL

COMMON AREA-2

COMMON AREA-1

SKYVIEW SUBDIVISION
LOTS 2 THRU 10 - VARIOUS OWNERS SUBD. PLAT IN P. B. 1920 PG. 163

ABEL HEIGHTS SUBDIVISION
LOTS 9, 10 & 24 THRU 34 - VARIOUS OWNERS SUBD. PLAT IN P. B. 1920 PG. 144

20' UTILITY EASEMENT

ZELMA HENDERSON
D. B. 814 PG. 126
P/O LOTS 10 & 11
SKYVIEW SUBD.

TODD STEADMAN
D. B. 690 PG. 18
P. B. 457 PG. 1-A

⊙ IE = 516.3'

⊙ TOP OF FIRE HYDRANT
ELEV. = 529.7'

IE = 522.5'